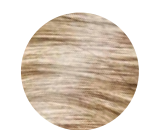


YOUR starting COLOR

VAŠE VÝCHOZÍ BARVA / VAŠA VÝCHODISKOVÁ FARBA



prošedivělá (přirozená barva protkaná bílymi vlasy)
prešedivělá (přirozená barva pretkaná bielymi vlasmi)



šedá až bílá (barvené délky avšak šedé odrosty)
šedivá až biela (farbené dĺžky avšak šedivé odrasty)



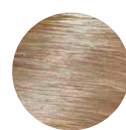
odbarvené vlasy
odfarbené vlasy



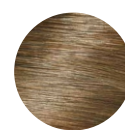
světlá blond
svetlá blond



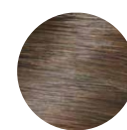
střední blond
stredná blond



tmavá blond
tmavá blond



světle hnědá
svetlohnedá



středně hnědá
stredná hnedá



tmavě hnědá
tmavohnedá

YOUR desired COLOR

ODSTÍN, KTERÝ SI PŘEJETE / ODTIEŇ, KTORÝ SI PRAJETE



UPOZORŇUJEME, ŽE BARVY NA VLASY KHADI NEZESVĚTLUJÍ VLASY, ALE OBOHACUJÍ JE O DALŠÍ BAREVNÉ PIGMENTY.

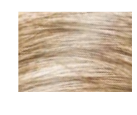
U PŘIROZENĚ ZRZAVÝCH NEBO NAČERVENALÝCH VLASŮ MŮŽE BÝT VÝSLEDNÁ BARVA TEPLEJŠÍ.



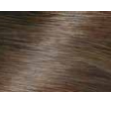
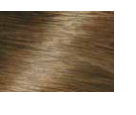
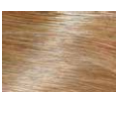
UPOZORŇUJEME, ŽE FARBY NA VLASY KHADI NEZOSVETLUJÚ VLASY, ALE OBOHACUJÚ ICH O ĎALŠIE FAREBNÉ PIGMENTY.

PRI PRIRODZENE RYŠAVÝCH ALEBO NAČERVENALÝCH VLASOCH MÔŽE BÝT VÝSLEDNÁ FARBA TEPLEJŠIA.

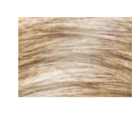
BEZBARVÁ – SENNA / CASSIA



BEZFAREBNÁ – SENNA / CASSIA



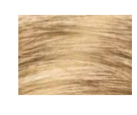
ZLATÝ PRELIV



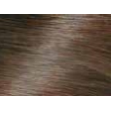
ZLATÝ PRELIV



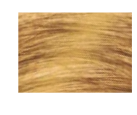
SVĚTLÁ BLOND



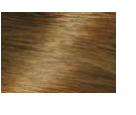
SVETLÁ BLOND



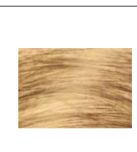
SLUNEČNÍ BLOND



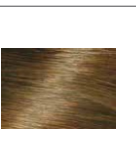
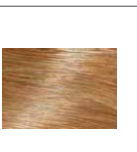
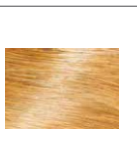
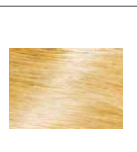
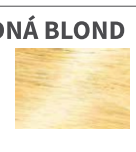
SLNEČNÁ BLOND



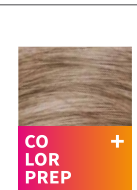
STŘEDNÍ BLOND



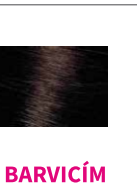
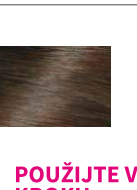
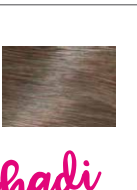
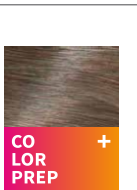
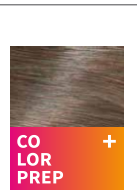
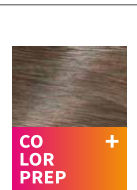
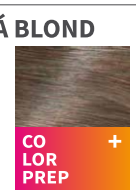
STREDNÁ BLOND



TMAVÁ BLOND



TMAVÁ BLOND

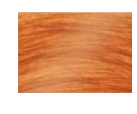


khadi
COLOR PREP?

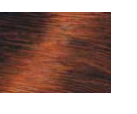
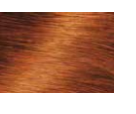
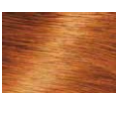
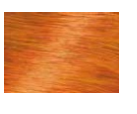


POUŽIJTE V PRVNÍM BARVICÍM KROKU.
POUŽITE V PRVOM FARBIACOM KROKU.

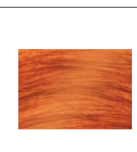
MĚDĚNÁ



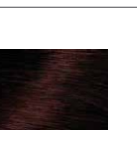
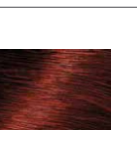
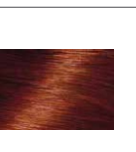
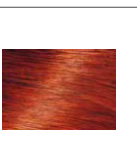
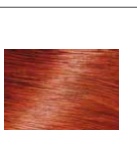
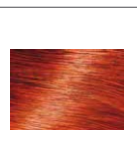
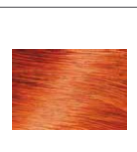
MEDENÁ



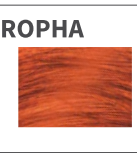
ČISTÁ HENNA



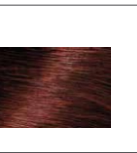
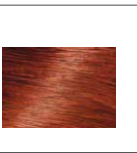
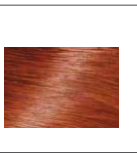
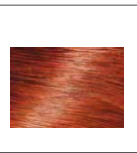
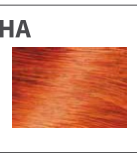
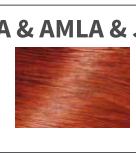
ČISTÁ HENNA



HENNA & AMLA & JATROPHA



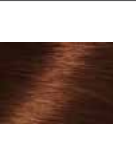
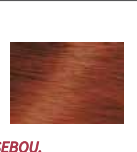
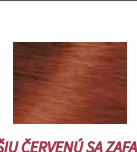
HENNA & AMLA & JATROPHA



MAHAGONOVÁ

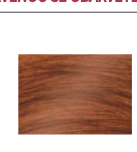


MAHAGÓNOVÁ

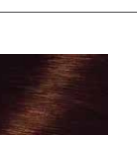
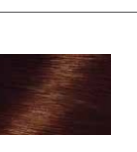
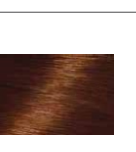
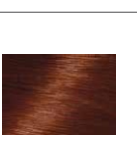
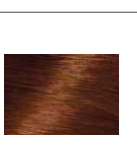
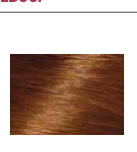
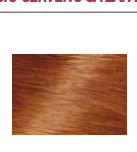
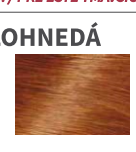


PRO JEŠTĚ TMAVŠÍ A CHLADNĚJŠÍ ČERVENOU SE OBARVĚTE 2x ZA SEBOU. / PRE EŠTE TMAVŠIU A CHLADNEJŠIU ČERVENÚ SA ZAFARBITE 2x ZA SEBOU.

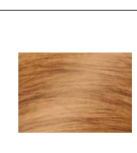
SVĚTLE HNĚDÁ



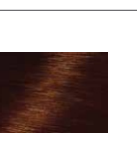
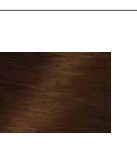
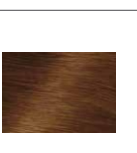
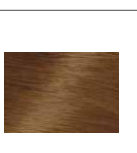
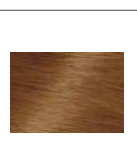
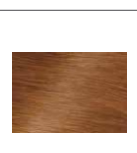
SVETLOHNEDÁ



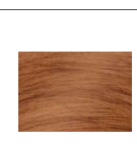
STŘEDNÍ HNĚDÁ



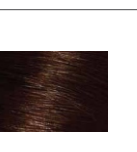
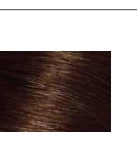
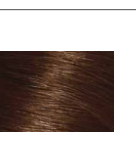
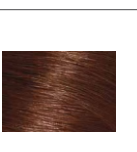
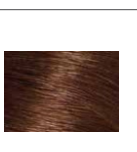
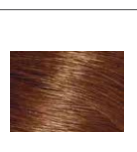
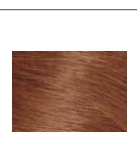
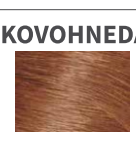
STREDNÁ HNEĐÁ



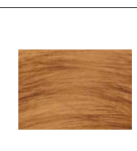
ORŠKOVĚ HNĚDÁ



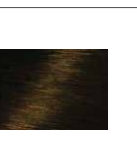
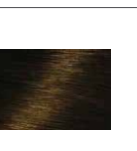
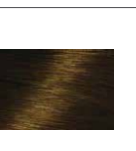
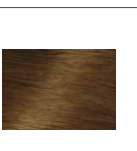
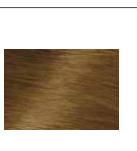
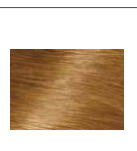
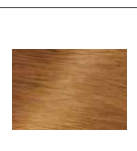
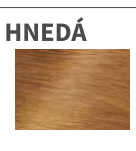
ORIEŠKOVHNEĐÁ



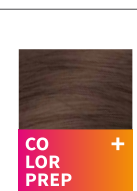
ZLATÁ HNĚDÁ



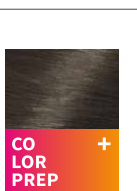
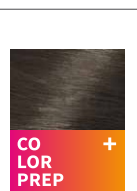
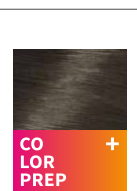
ZLATÁ HNEĐÁ



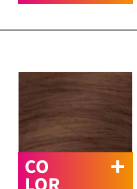
POPELAVĚ HNĚDÁ



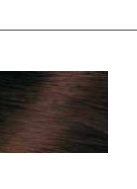
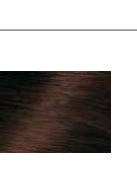
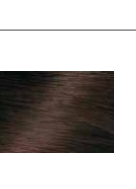
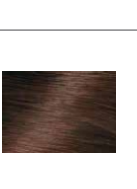
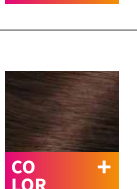
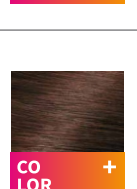
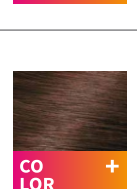
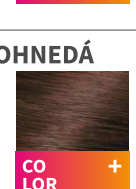
POPOLAVOHNEĐÁ



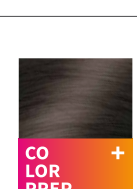
TMAVĚ HNĚDÁ



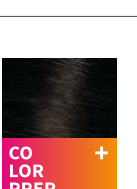
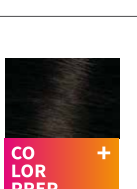
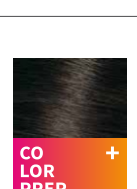
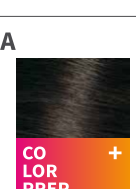
TMAVOHNEĐÁ



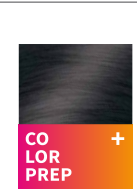
ČERNÁ



ČIERNA



ČISTÉ INDIGO



ČISTÉ INDIGO

